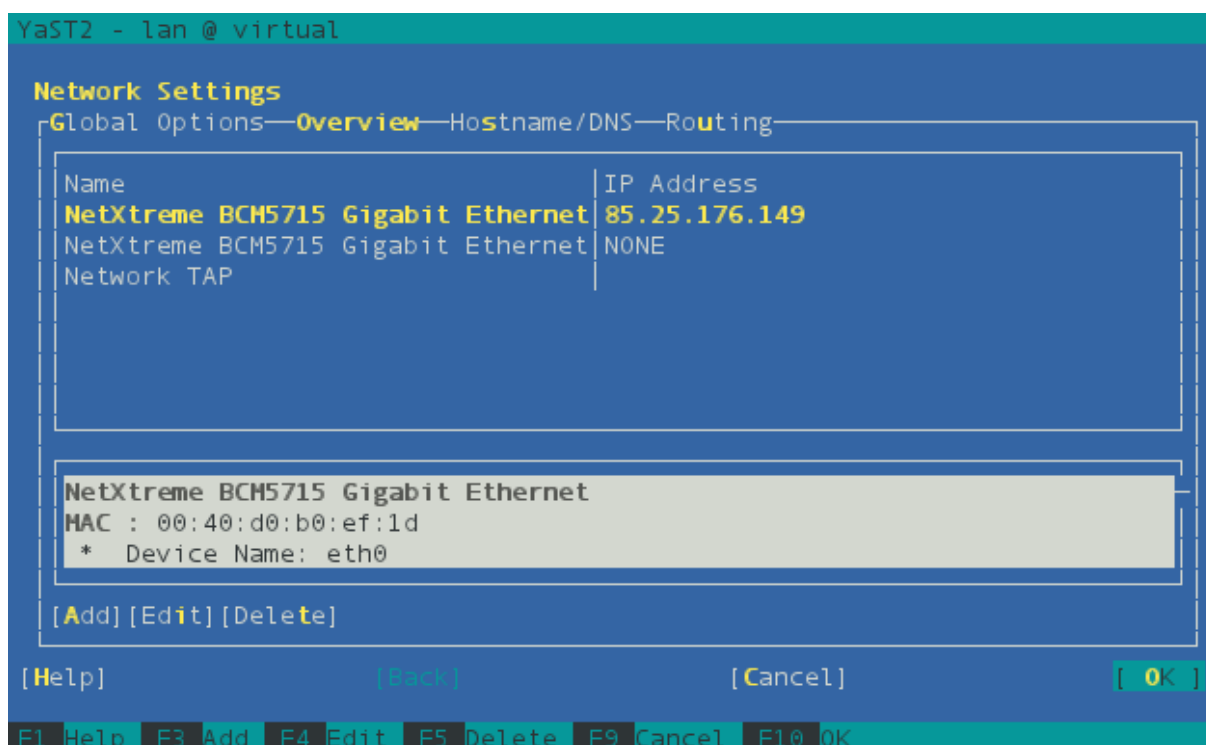
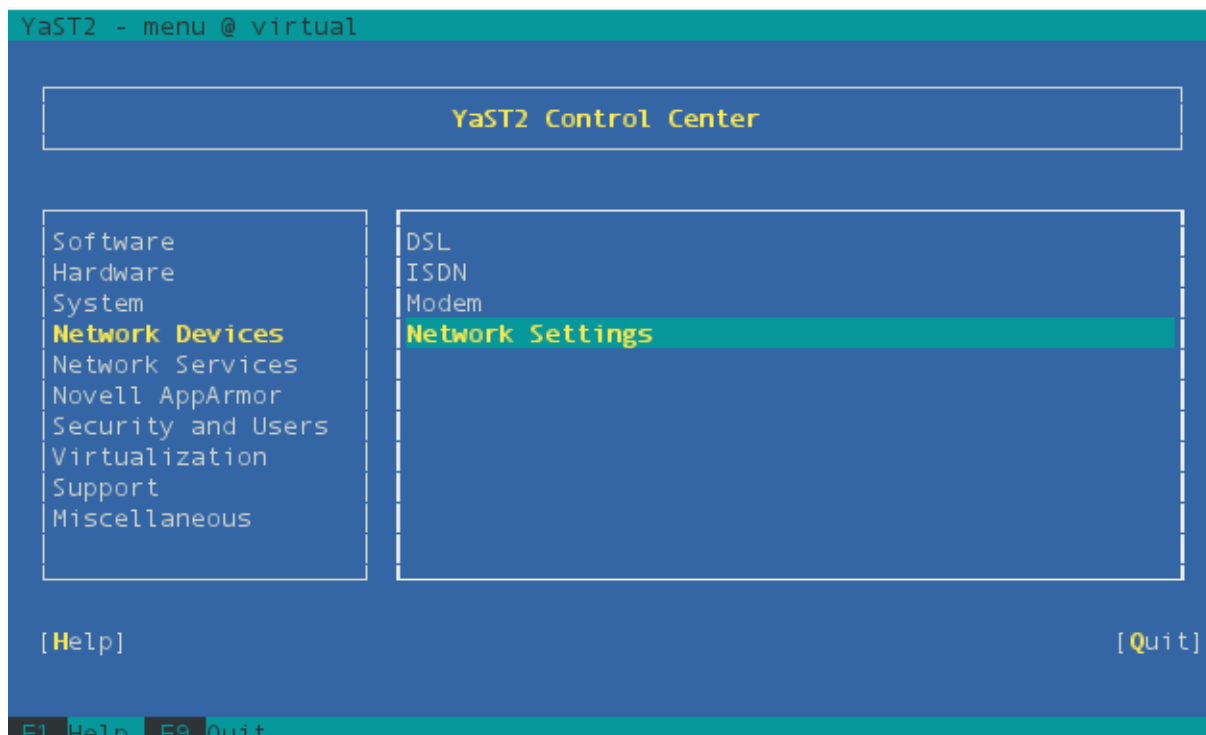


Bug 483233 - tap network device not fully supported and breaking routing

Steps taken to produce result for yast-log as of march 17th :



YaST2 - lan @ virtual

Network Card Setup

Address

Device Type

Configuration Name

TAPXXXXXXXXXXXX, TapXXXXXXXXXXXX

☒ Persistent Tunnel

Tunnel owner

Tunnel group

[Help]

[Back]

[Cancel]

[Next]

No routing did drop Standardgateway !

YaST2 - lan @ virtual

Network Settings

Global Options—Overview—Hostname/DNS—Routing

Default Gateway

Routing Table

Destination	Gateway	Netmask	Device	Options
-------------	---------	---------	--------	---------

[Add] [Edit] [Delete]

☒ Enable IP Forwarding

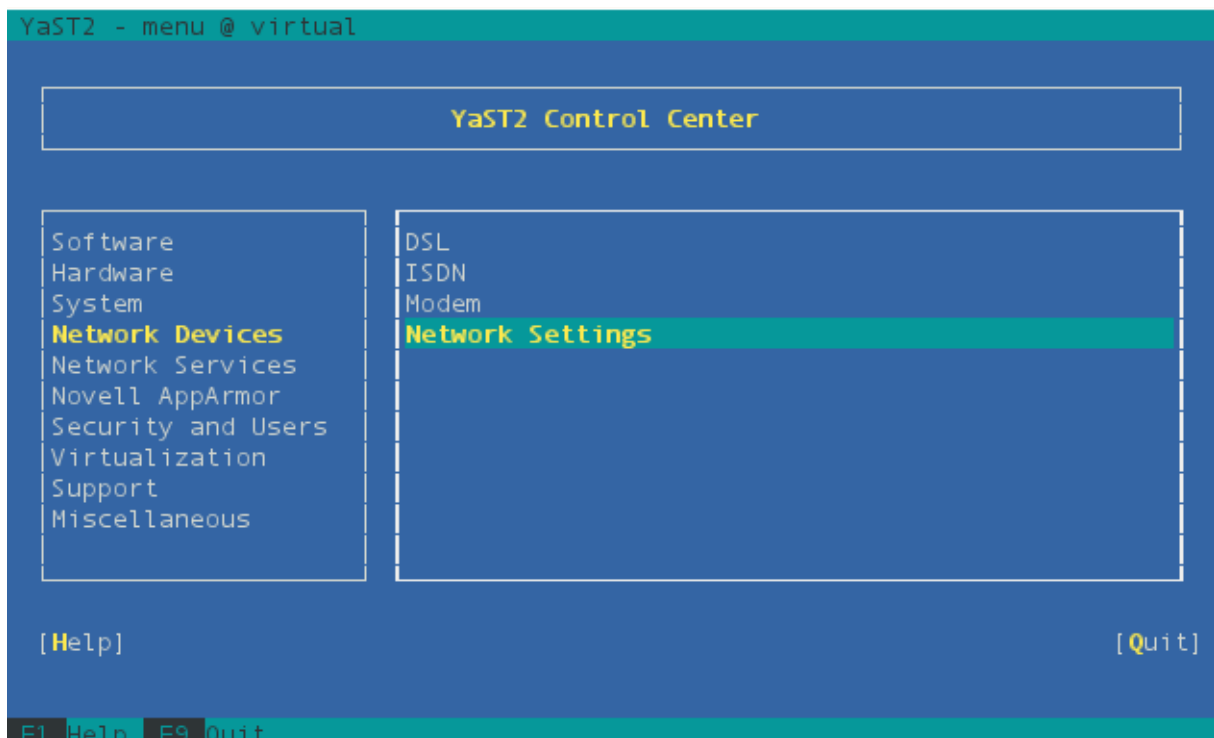
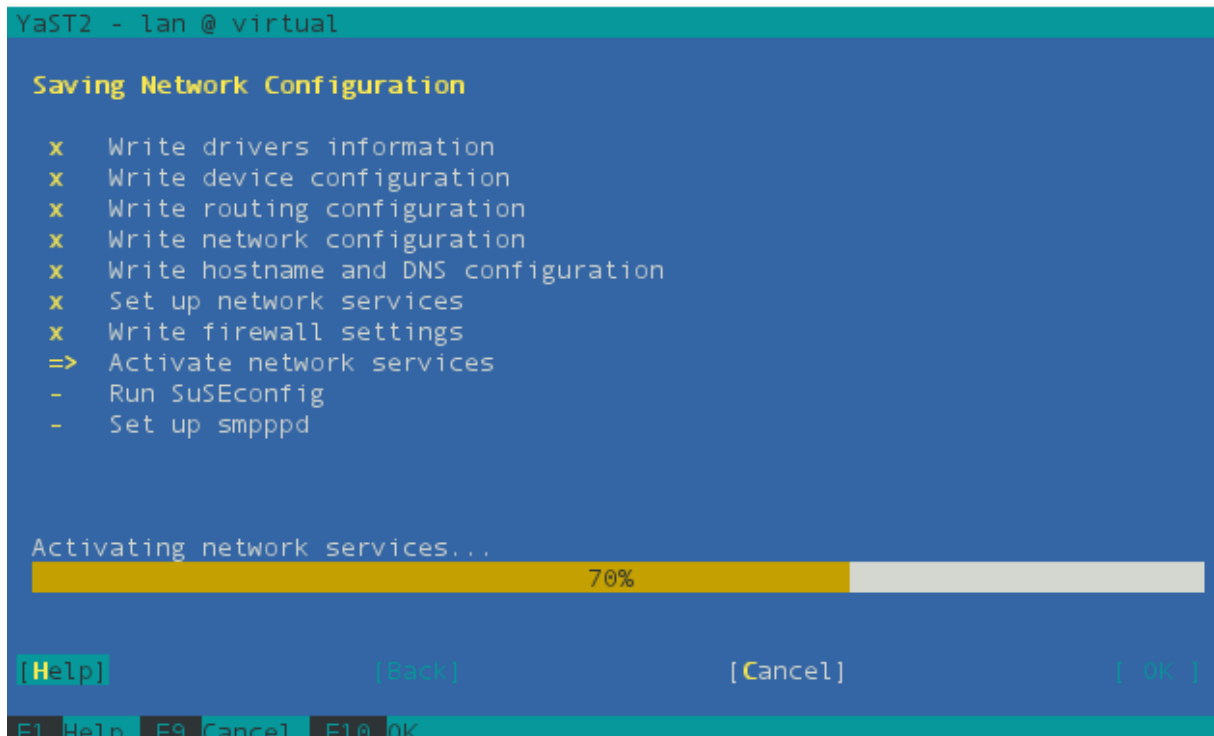
[Help]

[Back]

[Cancel]

[OK]

I put it in again to avoid connection loss and choose OK.



➔ upload y2log

No Problem on command line:

```
virtual:/opt/modrex-2/opensim_modrex/bin # tuncctl -u root -t tap0
Set 'tap0' persistent and owned by uid 0
virtual:/opt/modrex-2/opensim_modrex/bin # ifconfig tap0 192.168.100.1
virtual:/opt/modrex-2/opensim_modrex/bin #
```

Cheers,

ralf@huelsmann.name