

I tried to install the sound per instructions:

`lsmod | grep snd`

```
snd_pcm_oss      46560  0
snd_mixer_oss    18264  1 snd_pcm_oss
snd_seq          68032  0
snd_seq_device   9612  1 snd_seq
snd_hda_codec_nvhdmi  4424  1
snd_hda_codec_realtek 275324 1
snd_hda_intel    32472  0
snd_hda_codec    95032  3 snd_hda_codec_nvhdmi,snd_hda_codec_realtek,snd_hda_intel
snd_hwdep        10176  1 snd_hda_codec
snd_pcm          101984  3 snd_pcm_oss,snd_hda_intel,snd_hda_codec
snd_timer        28616  2 snd_seq,snd_pcm
snd              84088  10
snd_pcm_oss,snd_mixer_oss,snd_seq,snd_seq_device,snd_hda_codec_realtek,snd_hda_intel,snd_hda_
codec,snd_hwdep,snd_pcm,snd_timer
soundcore        9888  1 snd
snd_page_alloc   11640  2 snd_hda_intel,snd_pcm
```

The driver seems to be installed in the system.

When I followed the instructions in the sound page:

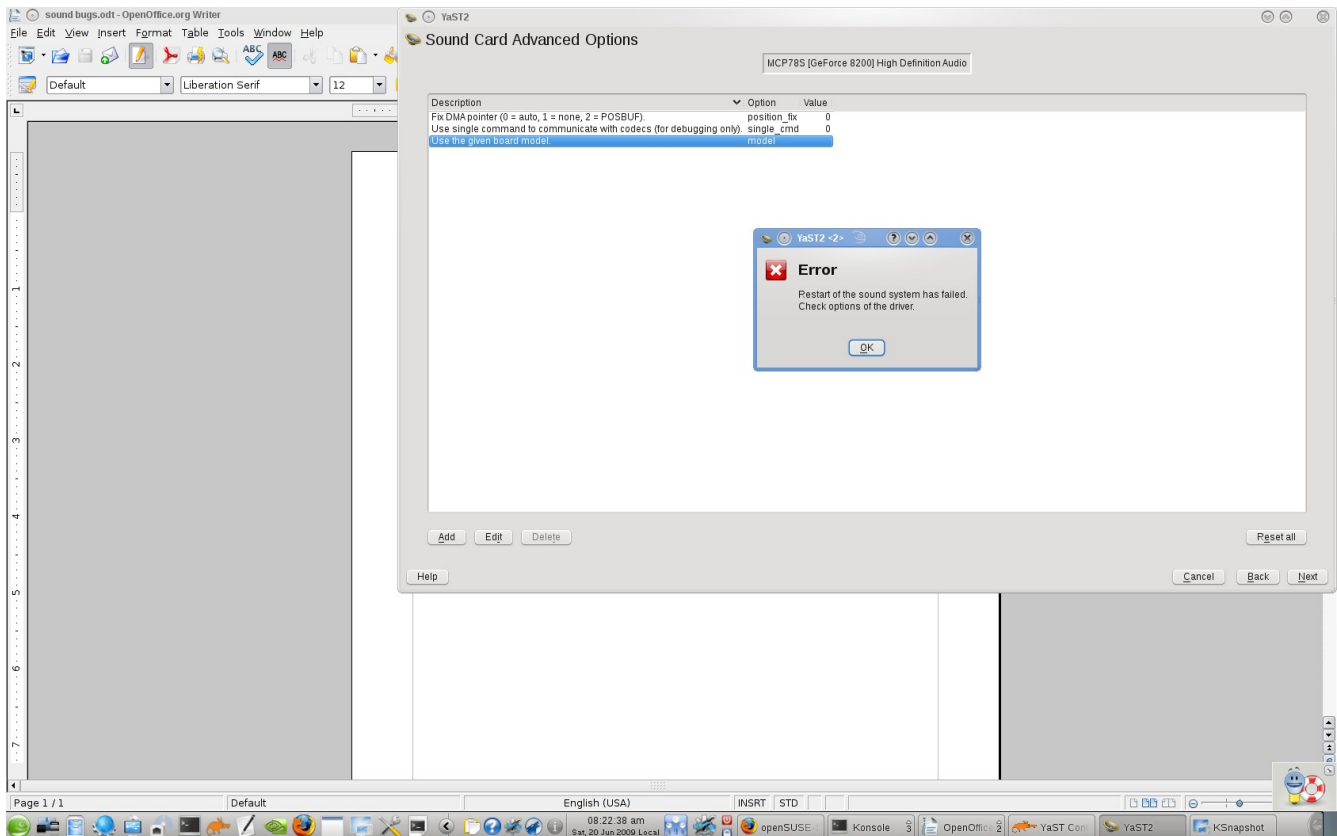
```
rpm -q alsa alsa-utils alsa-firmware
```

`alsa-1.0.20-1.3`

`alsa-utils-1.0.20-1.2`

`alsa-firmware-1.0.20-1.1`

When I try to restart the sound system via yast:



And when I tried it from the command line:

```
linux-1uhb:~ # /etc/init.d/alsasound restart
```

Shutting down sound driver
WARNING: All config files need .conf: /etc/modprobe.d/xen_loop, it will be ignored in a future release.

WARNING: All config files need .conf: /etc/modprobe.d/xen_loop, it will be ignored in a future release.

WARNING: All config files need .conf: /etc/modprobe.d/xen_loop, it will be ignored in a future release.

done

Starting sound driver
WARNING: All config files need .conf: /etc/modprobe.d/xen_loop, it will be ignored in a future release.

: hda-intel
WARNING: All config files need .conf: /etc/modprobe.d/xen_loop, it will be ignored in a future release.

done

WARNING: All config files need .conf: /etc/modprobe.d/xen_loop, it will be ignored in a future release.

When I do aplay no sound but I do get:

```
aplay -vv /usr/share/ooo3/basis3.1/share/gallery/sounds/wallewal.wav
```

Playing WAVE '/usr/share/ooo3/basis3.1/share/gallery/sounds/wallewal.wav' : Signed 16 bit Little Endian, Rate 11025 Hz, Mono

Plug PCM: Rate conversion PCM (48000, sformat=S16_LE)

Its setup is:

```
stream      : PLAYBACK
access      : RW_INTERLEAVED
format      : S16_LE
subformat   : STD
channels     : 1
rate        : 11025
exact rate   : 11025 (11025/1)
msbits      : 16
buffer_size  : 3763
period_size  : 235
period_time  : 21333
timestamp_mode : NONE
period_step  : 1
avail_min    : 235
period_event : 0
start_threshold : 3763
stop_threshold : 3763
silence_threshold: 0
silence_size : 0
boundary     : 1059190337362198528
```

Slave: Route conversion PCM (sformat=S32_LE)

Transformation table:

```
0 <- 0
1 <- 0
```

Its setup is:

```
stream      : PLAYBACK
access      : MMAP_INTERLEAVED
format      : S16_LE
subformat   : STD
channels     : 1
rate        : 48000
exact rate   : 48000 (48000/1)
msbits      : 16
buffer_size  : 16384
period_size  : 1024
period_time  : 21333
timestamp_mode : NONE
period_step  : 1
avail_min    : 1024
period_event : 0
start_threshold : 16384
stop_threshold : 16384
```

silence_threshold: 0
silence_size : 0
boundary : 4611686018427387904
Slave: Soft volume PCM
Control: PCM Playback Volume
min_dB: -51
max_dB: 0
resolution: 256
Its setup is:
stream : PLAYBACK
access : MMAP_INTERLEAVED
format : S32_LE
subformat : STD
channels : 2
rate : 48000
exact rate : 48000 (48000/1)
msbits : 32
buffer_size : 16384
period_size : 1024
period_time : 21333
tstamp_mode : NONE
period_step : 1
avail_min : 1024
period_event : 0
start_threshold : 16384
stop_threshold : 16384
silence_threshold: 0
silence_size : 0
boundary : 4611686018427387904

Slave: Direct Stream Mixing PCM

Its setup is:
stream : PLAYBACK
access : MMAP_INTERLEAVED
format : S32_LE
subformat : STD
channels : 2
rate : 48000
exact rate : 48000 (48000/1)
msbits : 32
buffer_size : 16384
period_size : 1024
period_time : 21333
tstamp_mode : NONE
period_step : 1
avail_min : 1024
period_event : 0
start_threshold : 16384
stop_threshold : 16384
silence_threshold: 0

silence_size : 0
boundary : 4611686018427387904
Hardware PCM card 0 'HDA NVidia' device 0 subdevice 0
Its setup is:
stream : PLAYBACK
access : MMAP_INTERLEAVED
format : S32_LE
subformat : STD
channels : 2
rate : 48000
exact rate : 48000 (48000/1)
msbits : 32
buffer_size : 16384
period_size : 1024
period_time : 21333
tstamp_mode : ENABLE
period_step : 1
avail_min : 1024
period_event : 0
start_threshold : 1
stop_threshold : 4611686018427387904
silence_threshold: 0
silence_size : 4611686018427387904
boundary : 4611686018427387904
appl_ptr : 0
hw_ptr : 1031